

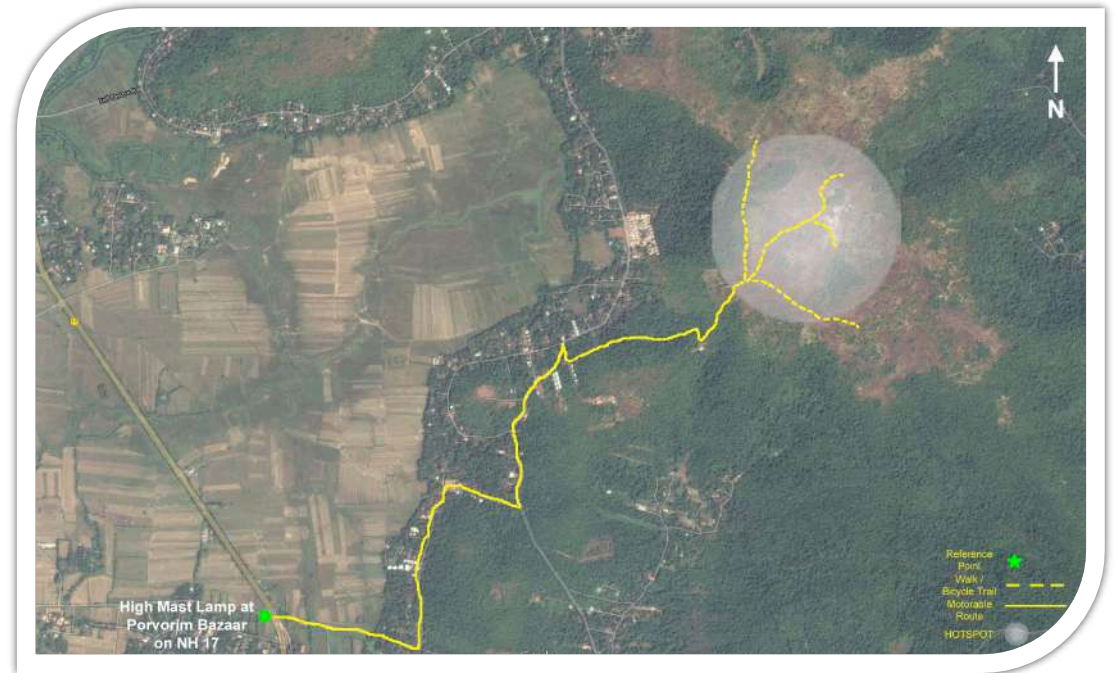


Socorro Plateau: Fact Sheet

Location: About 4 kms off NH17 between Mapusa and Panaji in Bardez Taluka

Habitat Description: Vast scrub grassland interspersed with light trees and thick jungles alongside its slopes. Habitat is abused by constant garbage dumping by civic bodies of the area.

Tips: You may need to pay extra attention to the map provided since getting directions to this place is not very easy.



HOTSPOT MATRIX

RARE BIRDS



BIRDING



PHOTOGRAPHY



DISTANCE



COMFORT



CURRENT COUNT

224 bird species

OTHER WILDLIFE



AVOCET & PEREGRINE

Star Species: Usually all raptors including the Common Buzzard, Common Kestrel, nightjars, Yellow-wattled Lapwing, Indian Peafowl, Red Spurfowl . This site plays host to the Amur Falcon in November.